



## The modernised CUVETTE with SYSIPHUS | Reliable wet dispersion of the finest particle sizes in the smallest quantities

Press Release POWTECH 2023

**Pulverhaus | Clausthal | DE – The compact laser diffraction sensor HELOS together with the wet dispersion system CUVETTE offers a reliable determination of the particle size distribution of finely dispersed samples with small sample volumes. We are pleased to present the improved CUVETTE with the new stainless steel cuvette SYSIPHUS at POWTECH 2023.**

The CUVETTE is a wet dispersion system for HELOS and has been specially developed for particle size analysis of suspensions and emulsions with small sample volumes of 50 ml in the CUVETTE 50 version or 6 ml as CUVETTE 6.

The cuvette itself consists exclusively of high-quality optical glass that has been sintered together so that contamination of the suspension or emulsion, e.g. by adhesives, is excluded. The sample is available completely unchanged for further use, making the instrument ideal for expensive and/or pharmaceutical samples.

For the enhanced CUVETTE in the practical LIM design, the proven glass cuvettes with 50 ml and 6 ml volumes are available. The range of applications is extended with a third cuvette made of stainless steel.



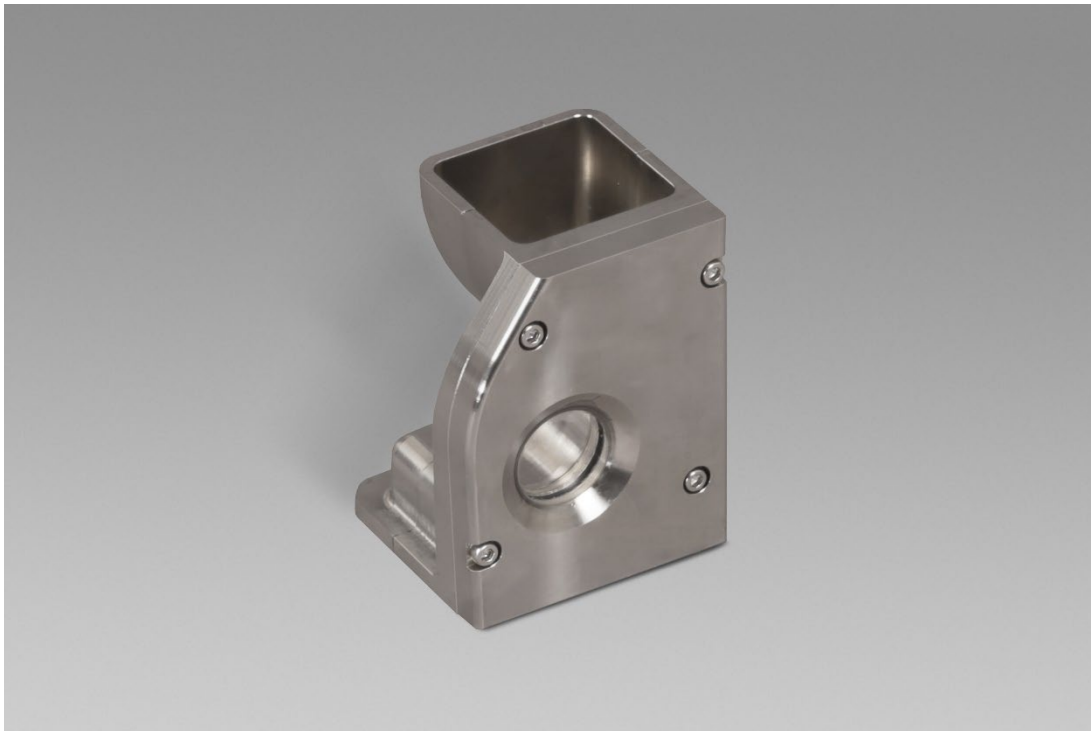
**Figure 1:** HELOS/BR laser diffraction sensor with CUVETTE/SYSIPHUS wet disperser for particle size analysis of suspensions and emulsions.

*Image-ID: HELOS-BR+CUVETTE/SYSIPHUS.jpg; Source: Sympatec GmbH*



### The new stainless steel cuvette SYSIPHUS | Particle size analysis from 0.1 µm in 50 ml

SYSIPHUS combines the dispersing performance of a full-grown system like QUIXEL with a sample volume of only 50 ml: The sample is simply dosed, automatically stirred, pumped into the measuring zone and ultrasonically dispersed. The finest particle sizes from 0.1 µm are thus reliably measured.

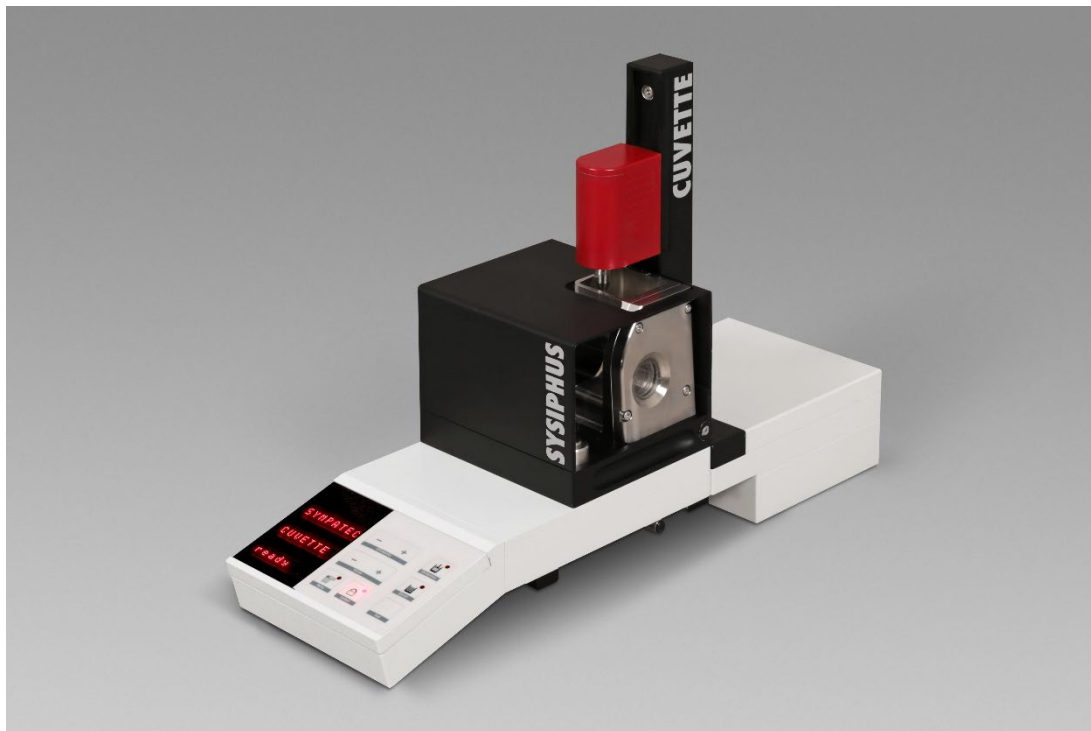


**Figure 2:** SYSIPHUS stainless steel cuvette with a sample volume of 50 ml.

*Image-ID: SYSIPHUS.jpg; Source: Sympatec GmbH*

### Modular system ensures more safety and easier operation

All three cuvettes can be mounted on the CUVETTE in the form of a modular system. HELOS and CUVETTE offer improved laser protection and significantly improved handling during sample preparation. By pulling out the module carrier in front of the sensor, the cuvettes can be inserted particularly easily and the dispersion state of the sample can be visually checked. In this position, the module can also be changed quickly and easily.



**Figure 3: CUVETTE/SYSIPHUS module rack.**

*Image-ID: SYSIPHUS-Module.jpg; Source: Sympatec GmbH*

*Contact Media*

Alina Probst  
Corporate Marketing Coordinator

Sympatec GmbH  
System | Partikel | Technik  
Am Pulverhaus 1  
38678 Clausthal-Zellerfeld  
Germany

Phone +49 5323 717 274  
Fax +49 5323 717 229

[marketing@sympatec.com](mailto:marketing@sympatec.com)  
[www.sympatec.com](http://www.sympatec.com)

*Sales contact and further information*

Dr Torsten Hübner  
Sales Manager Europe

Sympatec GmbH  
System | Partikel | Technik  
Am Pulverhaus 1  
38678 Clausthal-Zellerfeld  
Germany

Phone +49 5323 717 0  
Fax +49 5323 717 229

[sales@sympatec.com](mailto:sales@sympatec.com)  
[www.sympatec.com](http://www.sympatec.com)